

FAQs

Does TBG provide tents, chairs, linens, catering, etc.? No. We only provide the site, but we will give you the names of our preferred vendors who you may use for these services. Some tables and chairs are available for events in the Terrace and Stables Rooms.

Are we responsible for cleaning up after an event? Yes. We ask that you leave the area in the same condition as it was prior to your event. You may be charged for any damages incurred during your event.

Can we have alcohol at our event? Yes, but the renter must provide proof of liability insurance, follow all rules and laws, and may be required to obtain a liquor license. A Metroparks Ranger must be on duty at a \$35 per hour rate paid by the renter. Alcohol service must end 30 minutes prior to your event's end-time.

Can we have electricity and/or a deejay? Yes. For tented sites, electrical service can be arranged (no electric at Grand Allée). Music must be kept at reasonable levels and played no later than 11 pm.

Are there restrooms? Yes. Restrooms are located in the picnic area and inside the Crosby Conference Center. For events on the south end of the Garden, facilities may need to be rented.

What is your cancellation policy if there is bad weather? Refunds are not provided for cancellation or inclement weather (unless the Garden is closed for a weather emergency). In the event of cancellation, your rental fee may be used for another event of equal value within a year of the original scheduled date (60 days notice is required).

What don't you allow at TBG? We do not allow indoor smoking, pets, signage, decorations on garden displays, arches, the use of glitter/confetti, balloons, flower petals, etc. Also, parking is not allowed on grass, walkways, or trails. Candles may be used in enclosed containers.

Facility Rentals

Toledo Botanical Garden is the perfect venue for your next event.



For more information, call:

419.536.5566

www.toledogarden.org

5403 Elmer Drive; Toledo, OH 43615

Call today! 419.536.5566

Indoor Facilities

Toledo Botanical Garden is the ideal spot to hold productive meetings away from the workplace, perfect parties or a relaxing retreat in our unbeatable setting. Call today to reserve your space.



Terrace Room

Located inside the Crosby Conference Center, the Terrace Room is just off the Shade Garden. Its three sets of double doors open to provide a panoramic view of the Sycamore Allée. The brick area outside can also be used. The Terrace Room shares a kitchen with the Stables Room.



4-hour rental
Capacity: 80 **Sunday - Thursday** **\$400** **Friday & Saturday** **\$525**



Stables Room

This intimate room has windows overlooking our Herb Garden and Hosta Courtyard. The relaxed garden setting is perfect for a small reception, party or meeting.



4-hour rental
Capacity: 25 **Sunday - Thursday** **\$150** **Friday & Saturday** **\$200**



Garden Cottage

Surrounded by lush shade, this cottage is a perfect place for a small group gathering. It's equipped with a kitchen, enclosed porch, living room, craft / bride room and bathroom.



8-hour rental
Capacity: 15 **\$200**

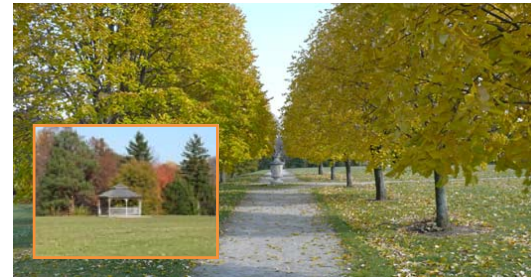
Outdoor Facilities (6-hour rentals)



Jazz Lawn & Shade Garden

Located near our Shade Garden and the Crosby Conference Center, the Jazz Lawn is a great place for that outdoor gathering you are planning. Capacity: 100

\$700



Grand Allée

By far our largest area, the open space is flanked by rows of Silver Linden trees and the overall beauty of nature. A quaint gazebo adds to the ambiance. Capacity: 500

\$1,000



Sycamore Allée & Festival Lawn

We hold many of our major in-house events here because of the extensive views and vast amount of space. This is our most popular tented site. Capacity: 500

\$1,500



Small Park w/ Arches

This beautiful wooden sculpture sits upon a large grassy knoll that has phenomenal panoramic views of both Crosby Lake and our Perennial Garden. Capacity: 350

\$1,500



Perennial Garden

Our most intimate and colorful setting, the Perennial Garden consists of separate areas with show-stopping scenery: Color Garden, English Border, Cottage Garden, Green Garden, and Grass Garden. Capacity: 100

\$1,500